

Copper

Colombia presents three (3) belts of copper porphyries in which important prospects for copper are found:

Western belt: Acandi, Murindo, Pantanos-Pegadorcito, Andagueda and Piedrancha.

Eastern belt: Andes, Inferno-Chili, Dolores and Mocoa.

Central belt: Quebradona, El Pisco, Tambo, Piedrasentada-Dominical and Mazamoras.

Copper exploration projects are currently being developed in different areas of the country, mostly in the departments of Cordoba, Antioquia, Cesar and Choco, with positive results.



962
Mining Titles



930,095 ha
(0.81% of national territory)



236 in exploration*

128 in construction & assembly *

597 in exploitation*

1 advance technical evaluation*

*Titles by contractual stage

1,370

Mining concession proposals

2,219,140 ha

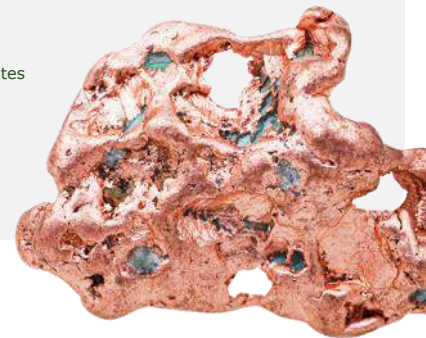
(1.94% of national territory)

Source: NMA, - Anna minería 30/11/2023



Economic Data Colombia

	Production Copper contained in concentrates (Ton)	Exports Copper and its concentrates (Ton)	Exports Copper and its concentrates (Million FOB USD)
2020	9,372	40,465	54.1
2021 ^P	9,194	52,558	91.2
2022 ^{Pr}	6,918	30,407	54.4



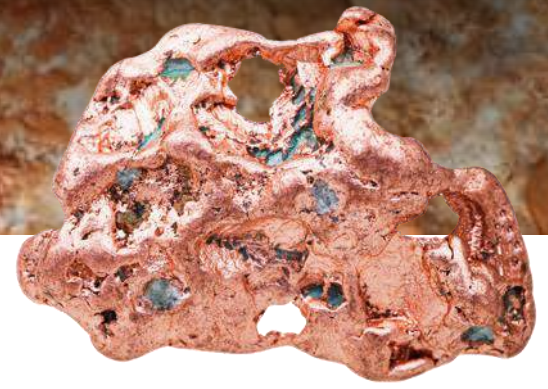
2022 World Rankings

World Production*	(000t)	Production In Latin America*	(000t)	Main Producing Companies	(000t)
1. Chile	5,324	1. Chile	5,324	1. Freeport-McMoRan	1,910
2. Perú	2,439	2. Perú	2,439	2. BHP	1,573
3. Rep. Dem. Congo	2,360	3. México	754	3. Codelco	1,553
4. China	1,666	4. Panamá	350	4. Glencore	1,058
5. Estados Unidos	1,232	5. Brasil	285	5. Southern Copper	895
6. Australia	881	6. Colombia	6.9	6. First Quantum	776
				7. Antofagasta	646

41*. Colombia 6.9

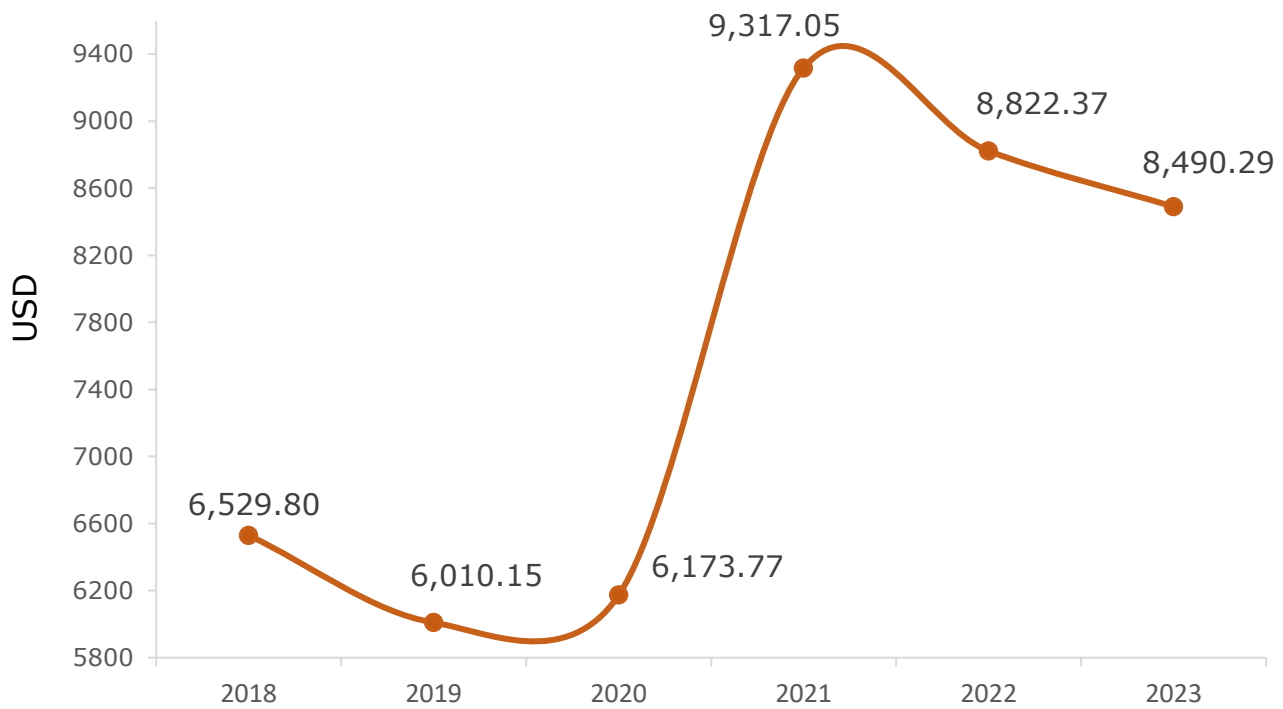
In Colombia, deposits with an average grade of up to 3.05% Cu in Proven Reserves are explored and exploited.

Copper

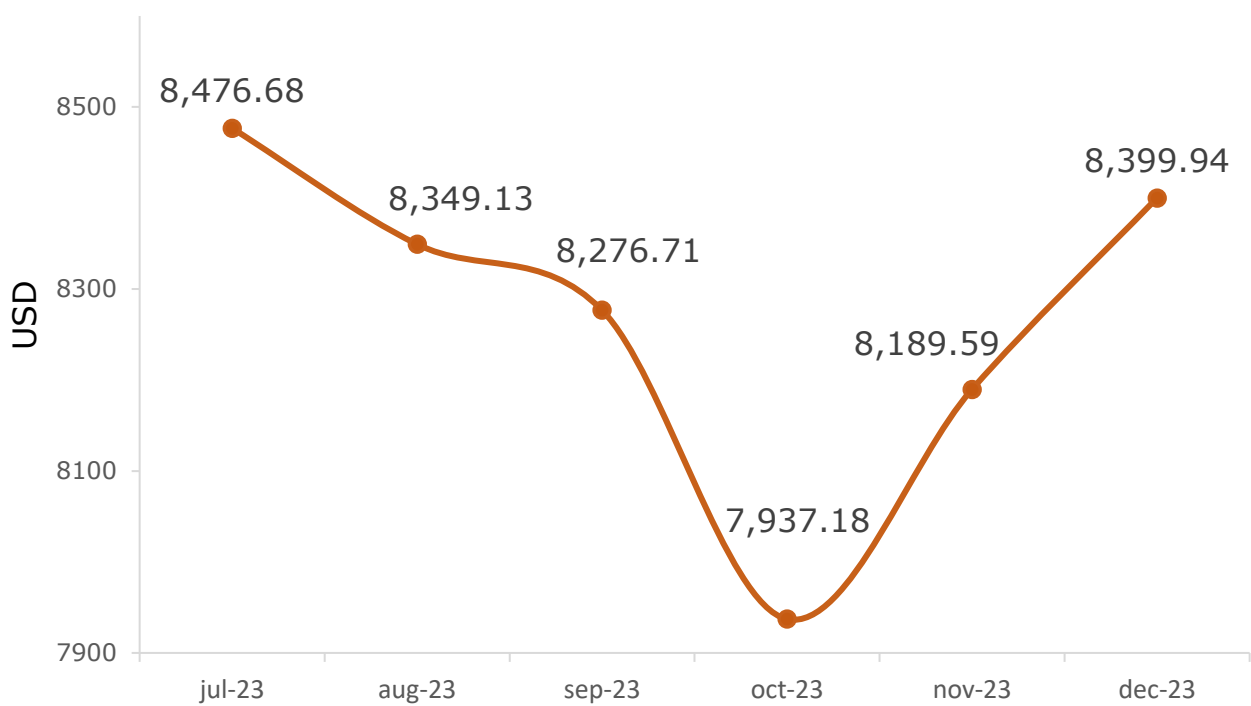


Economic Data

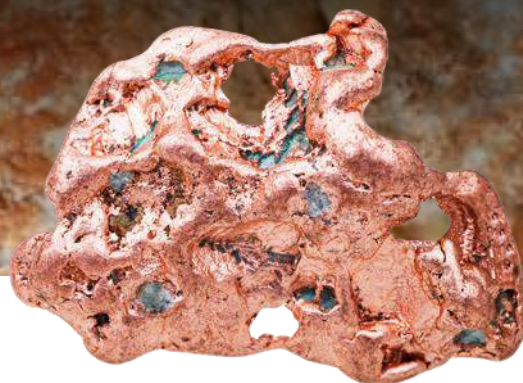
Average price in the last 6 years USD/mt



Average price in the last 6 months USD/mt



Copper



Main projects with resource and reserve reports under international standards

Project	Company	Minerals	Standard
Quebradona	AngloGold Ashanti	Gold and copper	SAMREC
El Roble	Atico Mining Corp.	Gold and copper	NI 43-101
Alacran (San Matias)	Cordoba Minerals Corp.	Gold and copper	NI 43-101
La Mina	Goldmining Inc.	Gold and copper	NI 43-101
Titiribi	Goldmining Inc.	Gold and copper	NI 43-101
Yarumalito	Goldmining Inc.	Gold and copper	NI 43-101
Mocoa	Libero Copper & Gold Corp.	Copper and molybdenum	NI 43-101
Soto Norte	Sociedad Minera de Santander- MINESA	Gold and copper	JORC

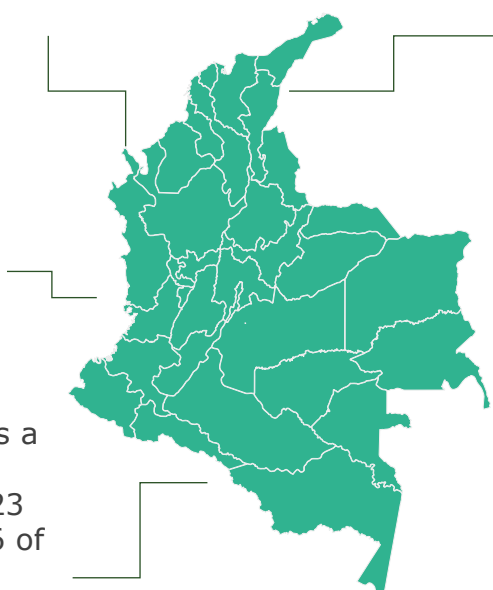
Main projects in exploitation 2022

Project	Company	Production 2022 (Pounds)
El Roble	Atico Mining Corp.	15,029,000

Production in Colombia corresponds to copper contained in polymetallic concentrates.

Copper concentrate exports are transported by sea from the port of Buenaventura (mainly). Export destinations for 2022: China 100%.

Copper was determined as a strategic mineral for Colombia in 2012 and 2023 (ANM Resolution No. 1006 of 2023).



The ANM started in March 2021 the objective selection process to award Six Strategic Mining Areas of copper and polymetallic minerals, in order to select the most favorable offer for the granting of special exploration and exploitation contracts for strategic minerals. The six blocks (copper areas) were awarded during 2021, 2022 and 2023.

Source: NMA 31/10/2023, DANE, SIMCO – UPME, TSX-TSXV, JSE, MINESA, <http://aticomining.com>. Colombian Geological Survey – CGS. Pr: preliminary.

In the Metallogenic Map of Colombia 2018 published by the Colombian Geological Survey - CGS, 142 deposits, occurrences and prospects of cupriferous type porphyry, volcanogenic massive sulphides (VMS), skarn, iron-copper-gold oxide deposits, and deposits hosted in sediments or stratoligates, especially in the Serrania de Perija and the Cordillera Occidental are identified.

The Colombian Geological Survey - CGS has established that Colombia has favorable geological environments for the existence of copper deposits, mainly in the departments of Cordoba, Choco, Nariño, Antioquia and the northeastern region of the country, in the provinces of La Guajira and Cesar.