



Drummond Ltd. Colombia

August 2020



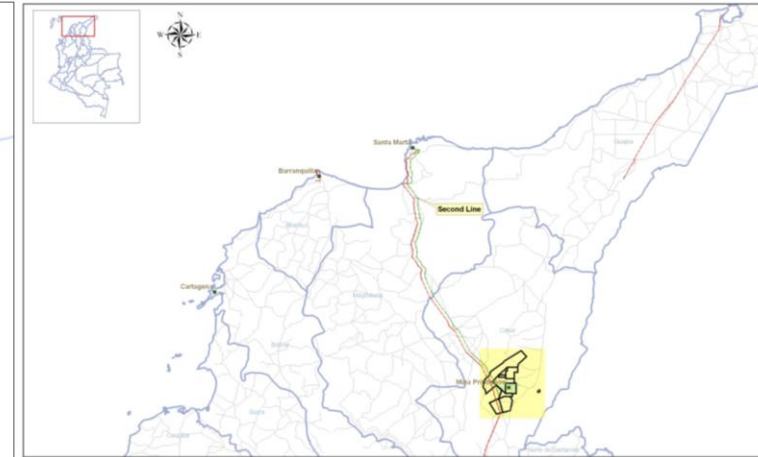
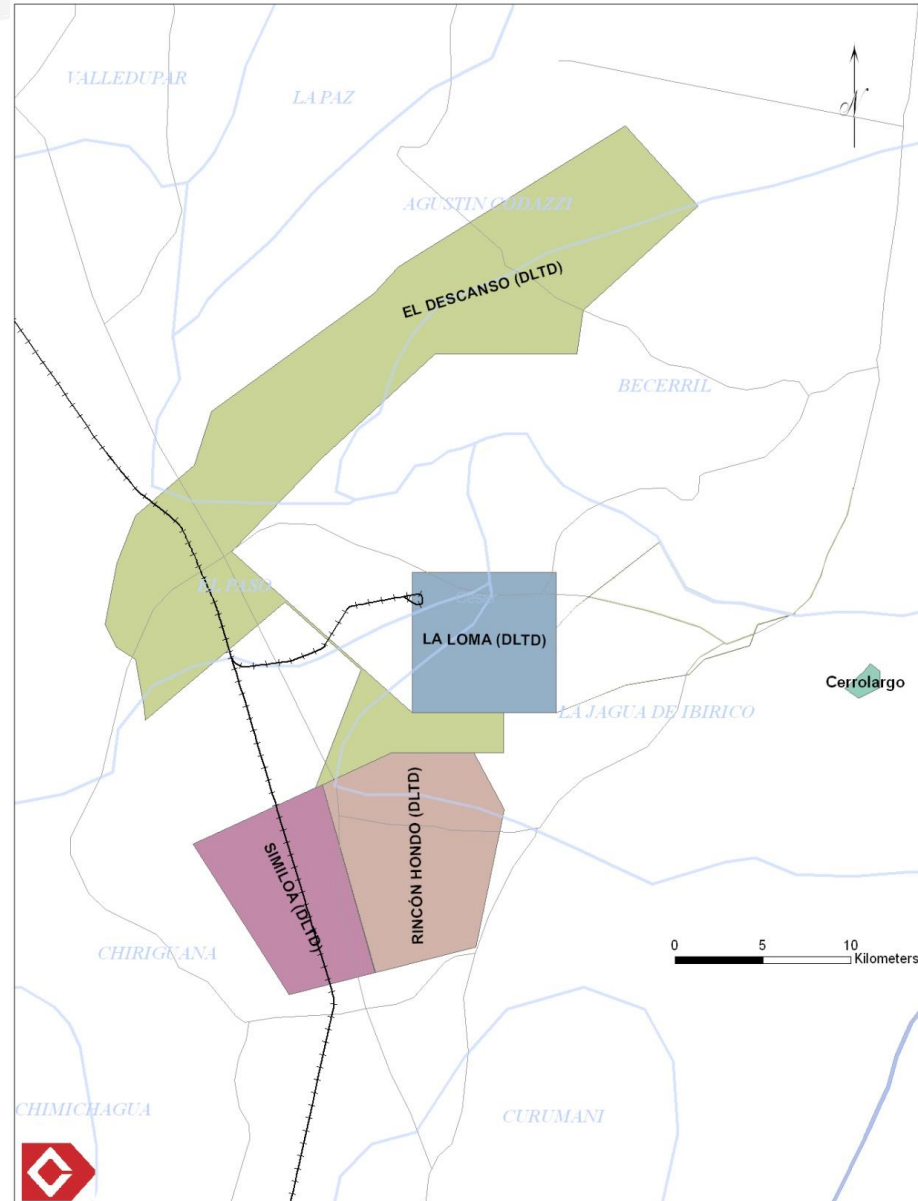
Drummond in Colombia

Drummond in Colombia since the 80's

First coal exporter in Colombia since 2017.

5 mining contracts; 2 in exploitation stage, 2 in construction stage, and one suspended (environmental license).

All mining contracts located in Cesar department, Northern Colombia.





Drummond Resources and Reserves in Colombia

Subbituminous Coal medium volatile.

Descanso North

Currently in exploitation stage,
Production 2019: 23.1 MT
Resources 1,769 MMTon
Reserves 979 MMTon

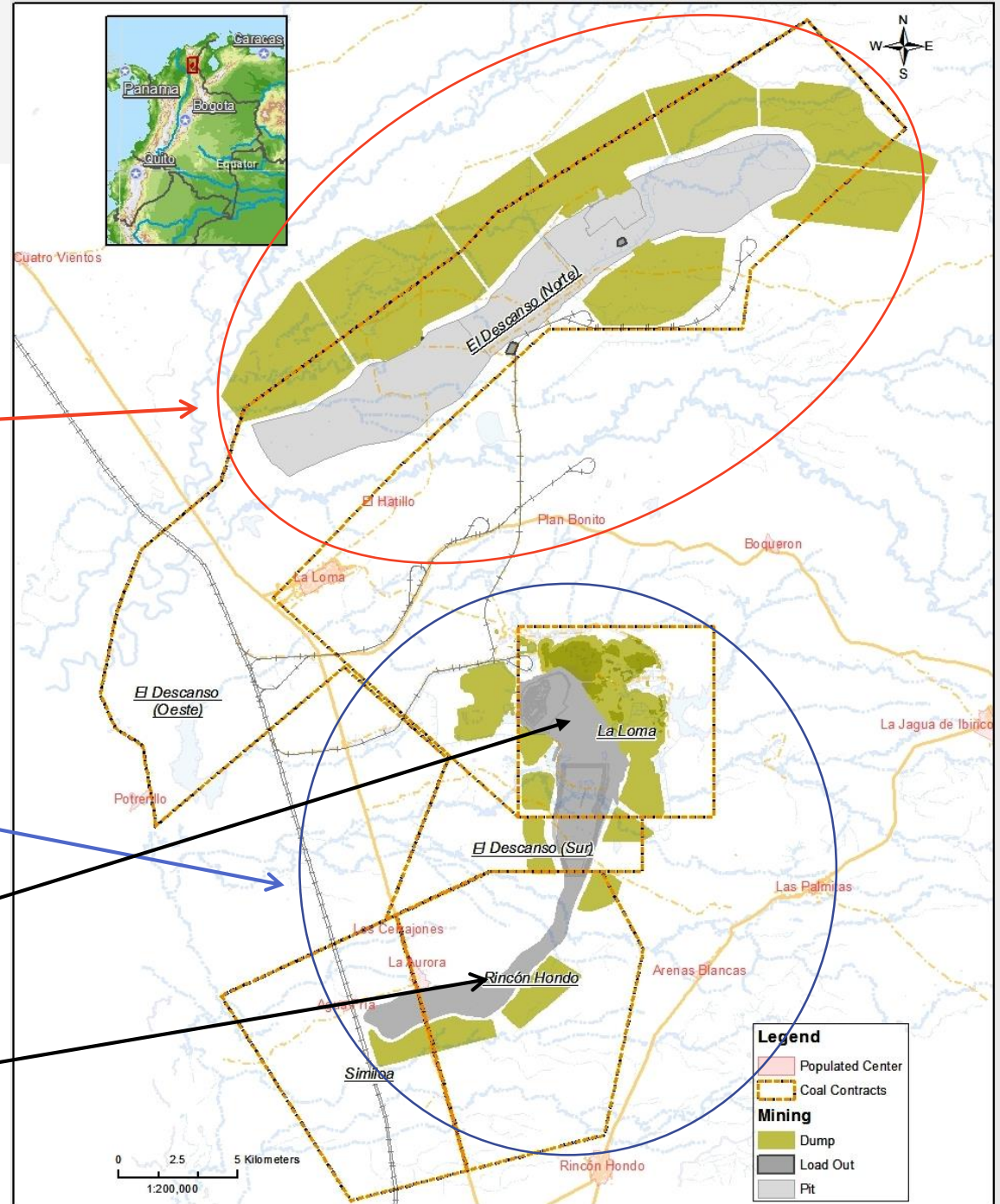
Integrated Operation of Boqueron Sinclinal.

Resources 589 MMTon
Reserves 265.1 MMTon

La Loma

Currently in exploitation stage
Production 2019: 9.5 MT
In August 2020, Rincon Hondo contract started

Annual Mining Capacity 32MT



Drummond Mining Operations



All open pit mining operations located in the Cesar department (Northern Colombia).

63 coal seams mined simultaneously sampled in pit before train load and before vessel load.

All coal seams have diverse quality characteristics allowing coal blending to meet customers' quality requirements.

Average quality of coal exported in 2019 was: 15.3 % moisture, 6.97% Ash (AR), 0.55% sulfur (AR) and 10,733 BTU/Lb (GAR.)





Drummond Transportation Infrastructure

- 2 Mines
- 3 Load Outs
- Double track at Pribbenow mine
- A single track to El Descanso mine with siding at loadout
- Signal crossing system
- Track Maintenance
- Camp facility
- Rail road equipment (Cars and locomotives)



Drummond Port Infrastructure



Coal (Old) Yard No 1: 300,000 MT Max capacity

- 3 Radial Stackers
- 5 Open feeders in coal Yard 1
- Belt conveyor system

Coal (Tunnel) Yard No. 2: 1.2 Million MT Max capacity

- 4 Tunnel reclaimers, 65 feeders
- Belt conveyor system
- Traveling Stackers



Private Port, located in Cienaga-Magdalena.

Nominal capacity 60MT

Single, double and quad car dumpers: MAX unloading rate + 11,000 MTPH.

Traveling stackers:

- Belt Conveyor – 84”
- MAX Rate 8,000 MTPH/each

Storage capacity:
1.5 Million MT



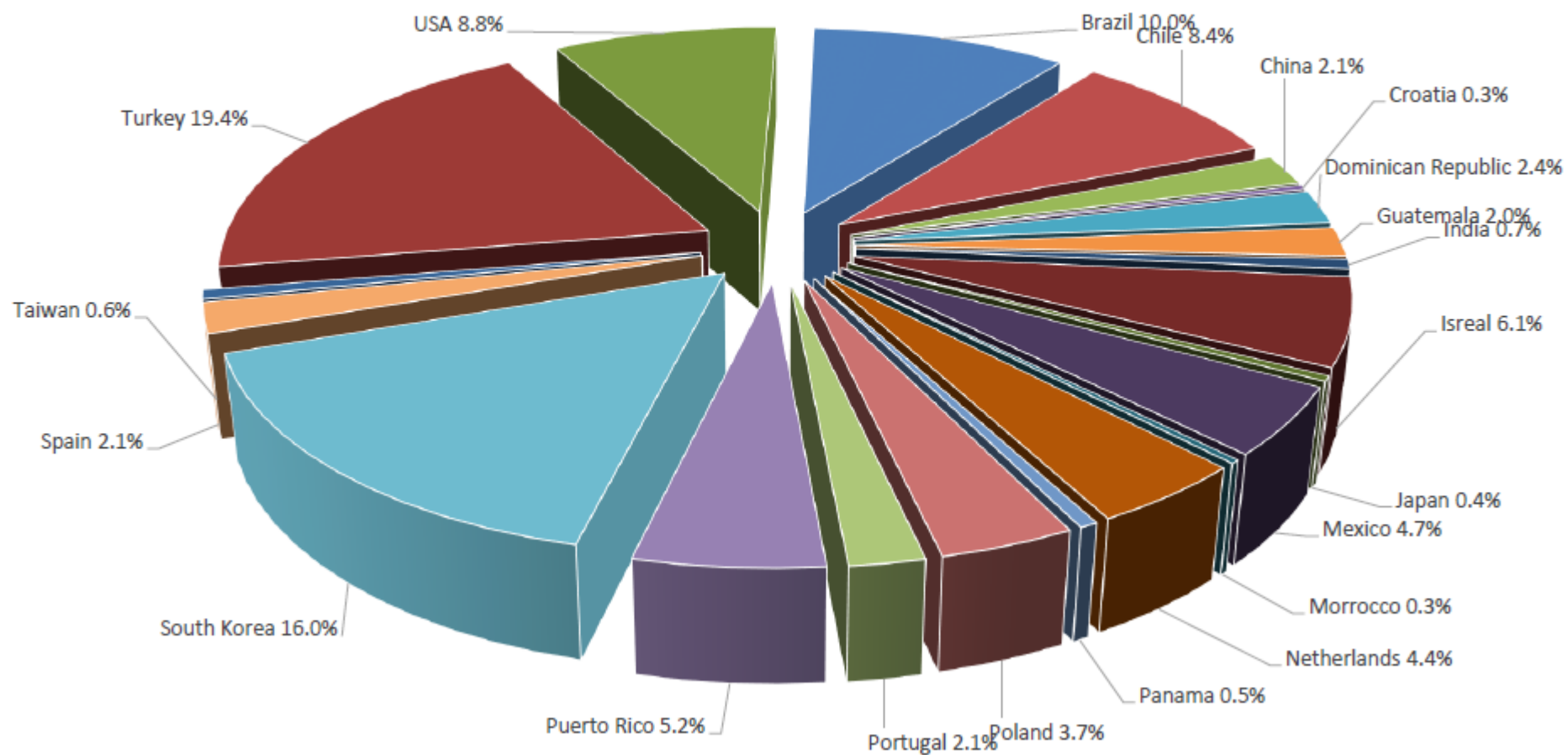
DIRECT LOADING PIER



2 Shiploaders
MAX Loading rate – 8,000 MTPH/Each Loader with Rotating Scoop

- **Trestle 1,525 m**
- **Pier 800 m.**
- **4 Berth Positions**
- **2 Shiploaders**

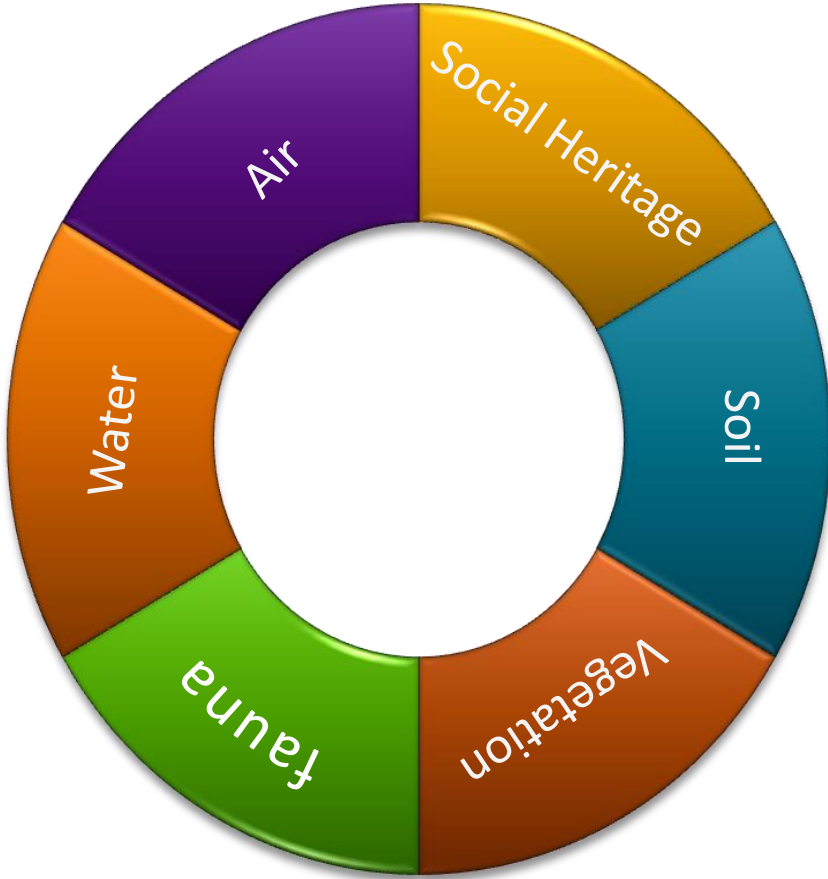
Coal Exports through 2019



Export volume:

IH 2020	15.4 MT
2019	31.1MT
2018	31.5 MT
2017	32.4 MT





Certification ISO 14001 of 2015 – Renewal in 2020
Certification ISO 45001 of 2018 – Renewal in 2020
Better Coal member since 2014



DRUMMOND LTD.
COLOMBIA